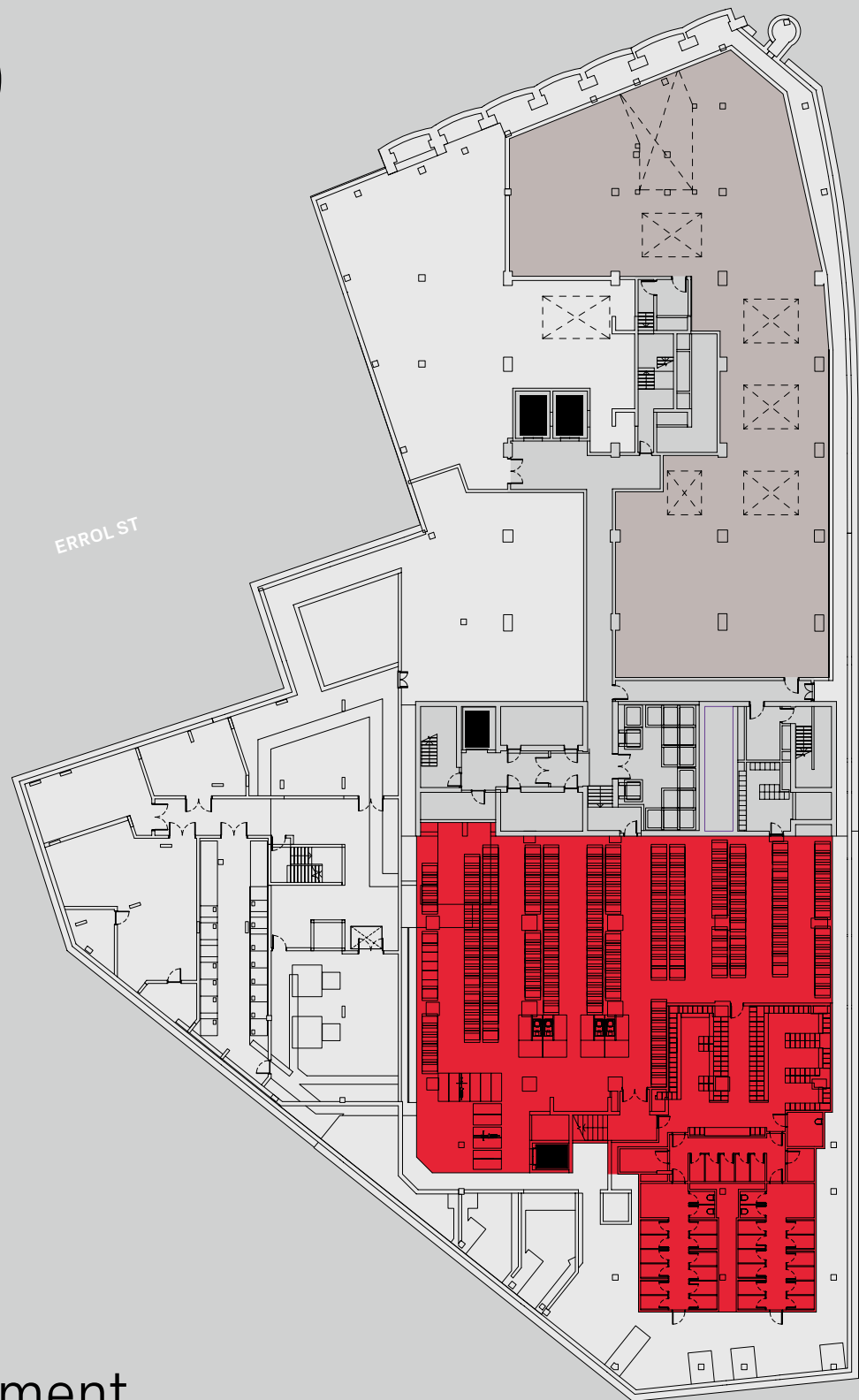


HY
LO

+ PLANS

A
BAS
ECA
MP
FOR
BRI
LLIA
NCE.

B



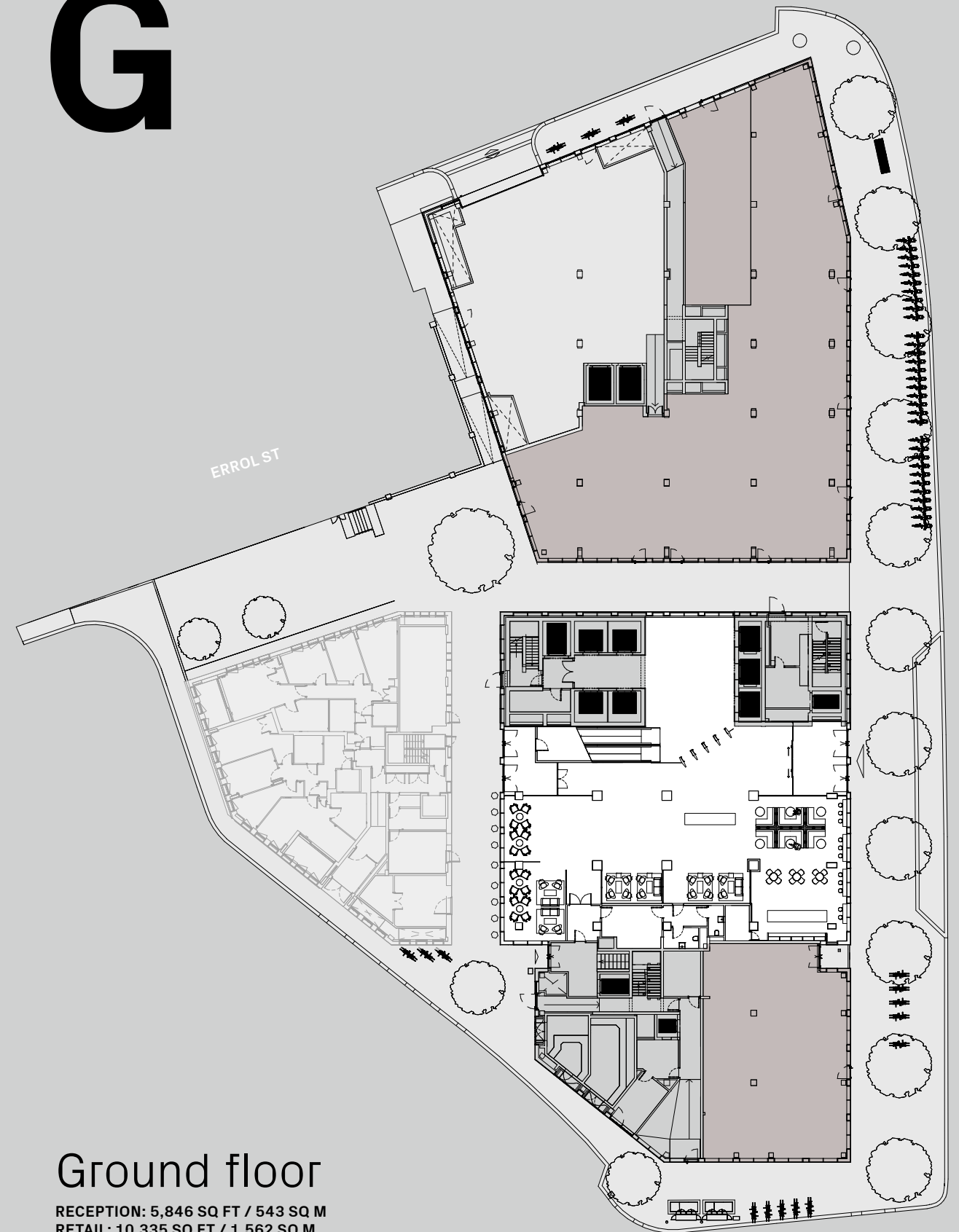
Basement

RETAIL: 6,477 SQ FT / 602 SQ M

- Bike Store
- Core
- Lifts
- Retail

Floor plans not to scale. For indicative purposes only.

G



Ground floor

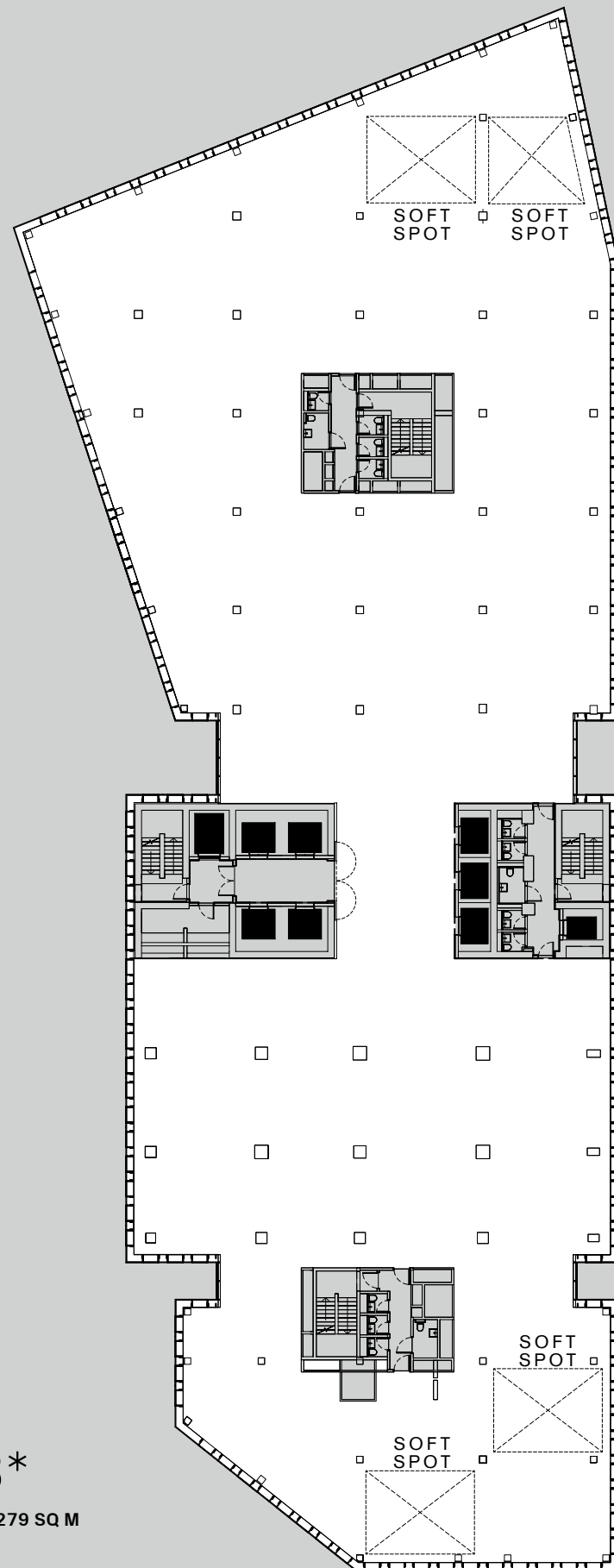
RECEPTION: 5,846 SQ FT / 543 SQ M
RETAIL: 10,335 SQ FT / 1,562 SQ M

- Reception
- Core
- Lifts
- Retail

Floor plans not to scale. For indicative purposes only.

2-3

ERROL ST



BUNHILL ROW

Typical floor 2-3*

24,484 SQ FT / 2,275 SQ M - 24,539 SQ FT / 2,279 SQ M

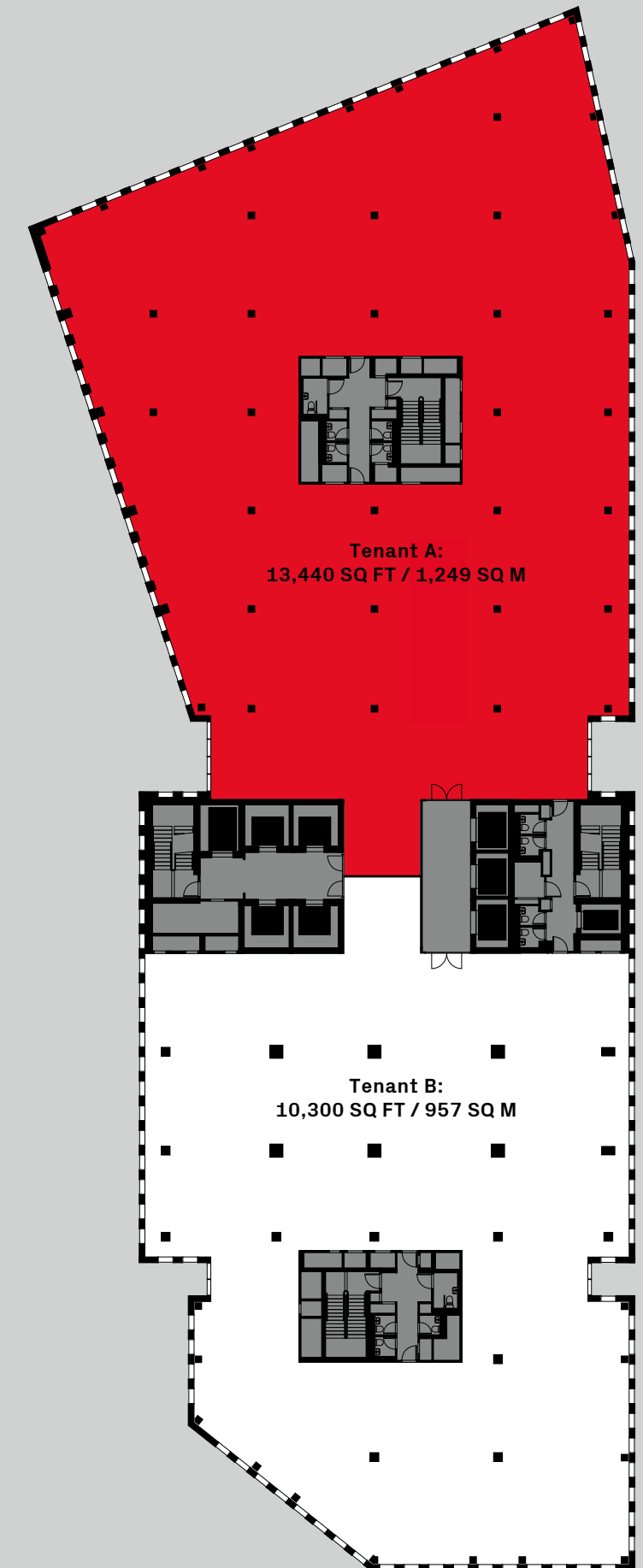
- Office
- Core
- Lifts

* First floor incorporates escalator landing zone.

Floor plans not to scale. For indicative purposes only.

3

ERROL ST



BUNHILL ROW

Split floorplate

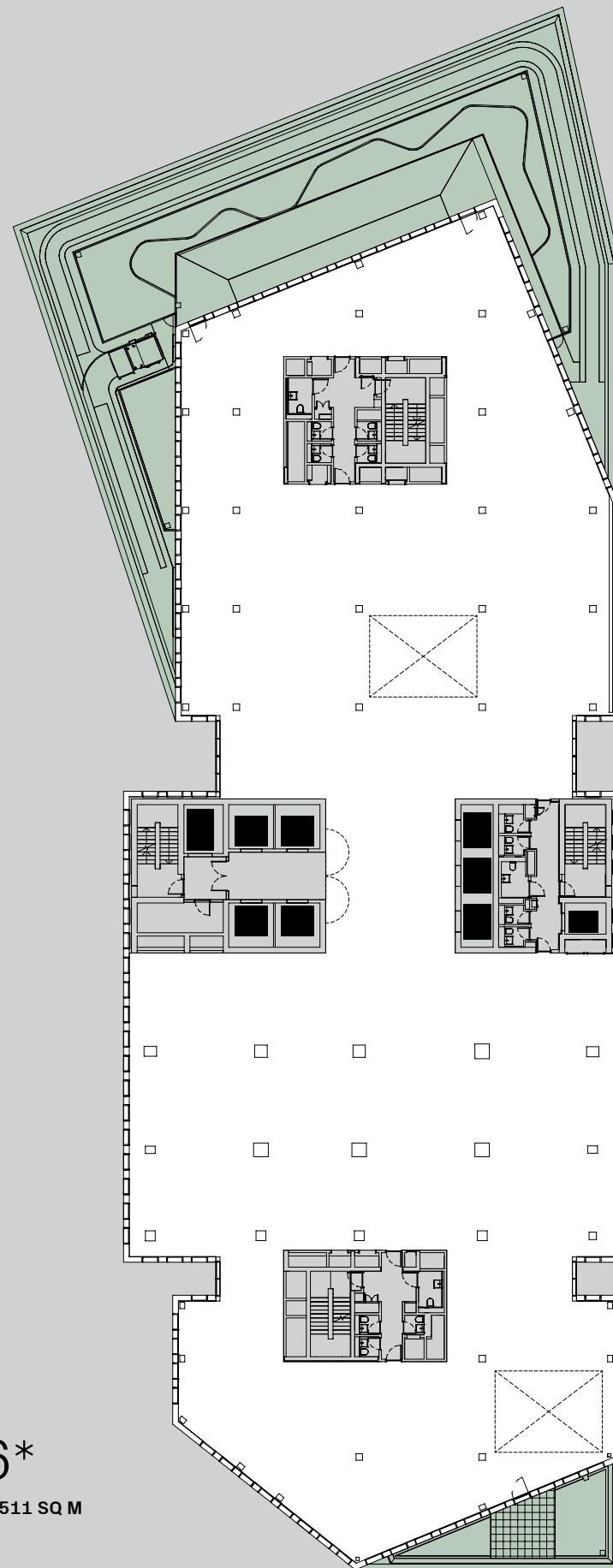
Tenant A: 13,440 SQ FT / 1,249 SQ M

Tenant B: 10,300 SQ FT / 957 SQ M

- Office
- Core
- Lifts

Floor plans not to scale. For indicative purposes only.

4-6



Typical floor 4-6*

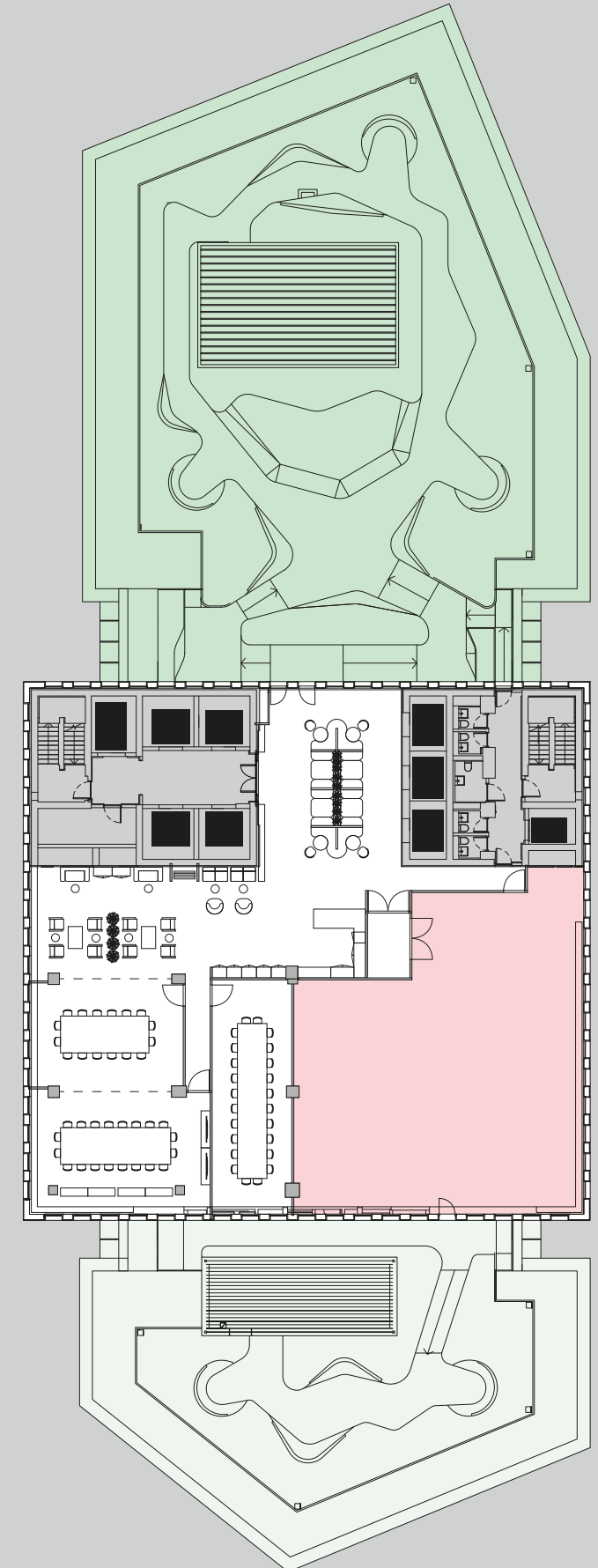
18,348 SQ FT / 1,705 SQ M - 16,264 SQ FT / 1,511 SQ M
 TERRACE: 2,821 SQ FT / 262 SQ M

- Office
- Core
- Lifts
- Terrace*

* Terrace on fourth floor only.

Floor plans not to scale. For indicative purposes only.

7



7th floor

OFFICE: 3,457 SQ FT / 321 SQ M

- Office
- HY-Lounge
- Lifts
- Core
- HY-Lounge Communal Terrace
- Office Private Terrace



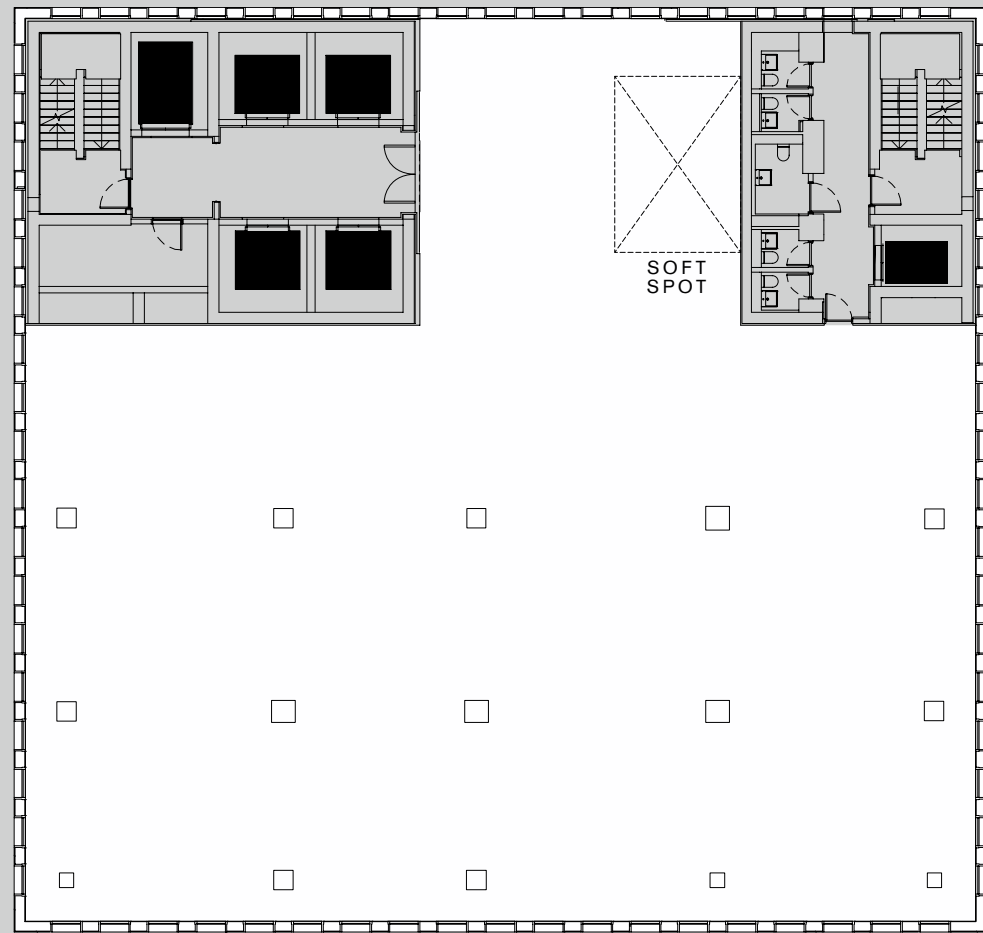
BUNHILL ROW

ERROL ST

BUNHILL ROW

ERROL ST

12-14



BUNHILL ROW

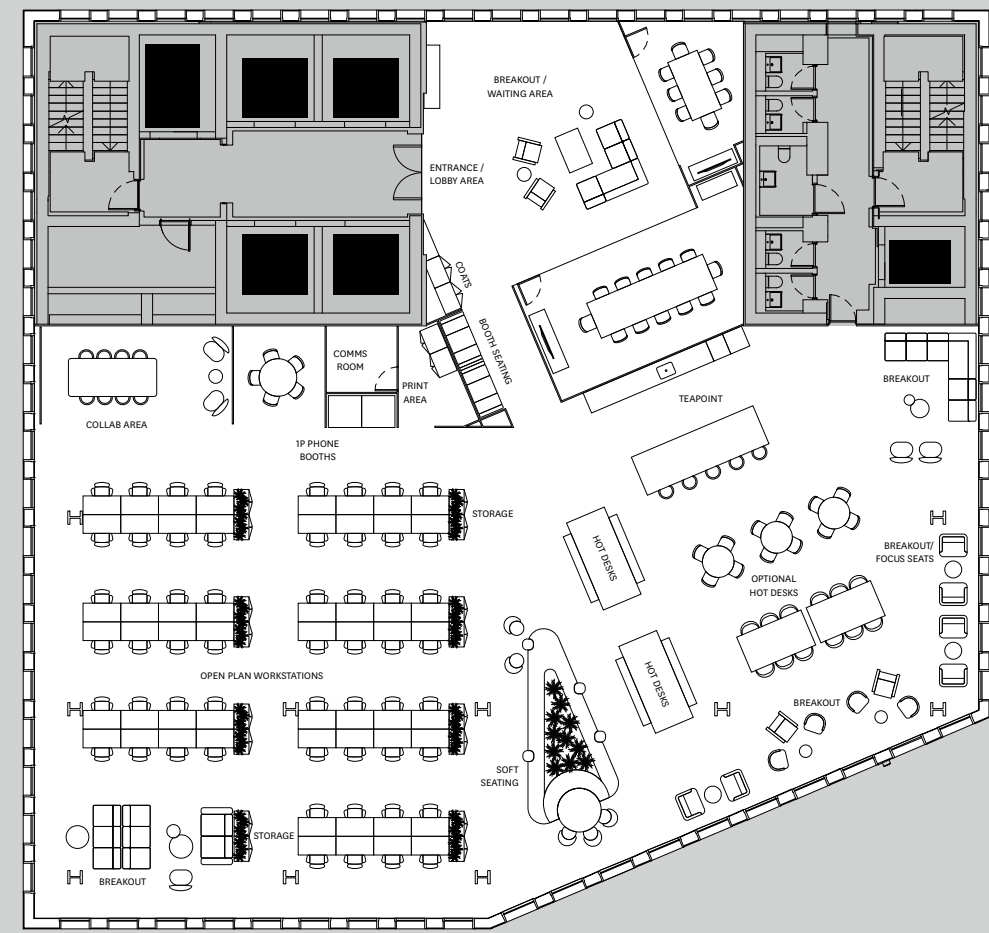
Typical floor 12-14

7,100 SQ FT / 660 SQ M - 7,101 SQ FT / 660 SQ M

Office
 Core
 Lifts

Floor plans not to scale. For indicative purposes only.

18



BUNHILL ROW

18th floor

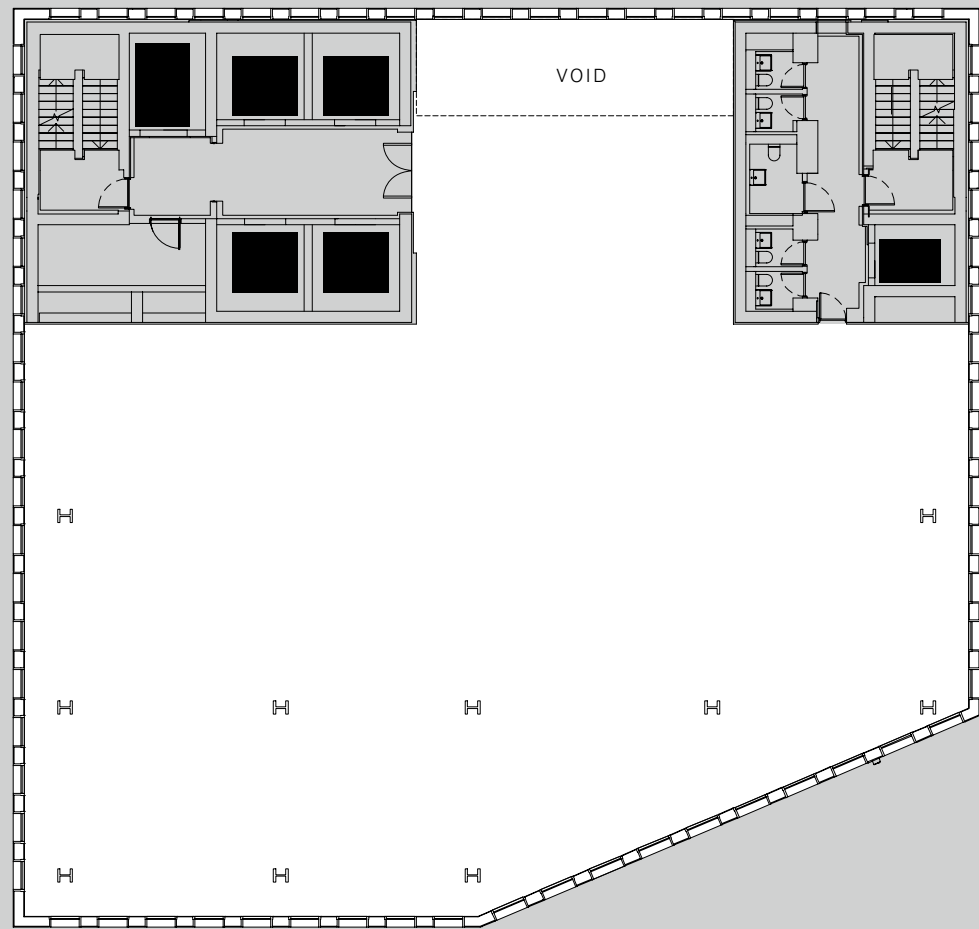
6,550 SQ FT / 609 SQ M

Office
 Core
 Lifts

Floor plans not to scale. For indicative purposes only.

| | |
|------------------------------|----|
| DESKS (1200 X 800) | 56 |
| HOT DESKS | 16 |
| 12P MEETING ROOM | 1 |
| 8P MEETING ROOM | 1 |
| 4-8P COLLABORATION AREAS | 6 |
| PHONE BOOTHS | 2 |
| TEAPOINT | 1 |
| TEAPOINT SEATS | 30 |
| >4P SOFT SEAT BREAKOUT AREAS | 2 |
| PRINT AREA | 1 |
| COMMS ROOM | 1 |

19-24



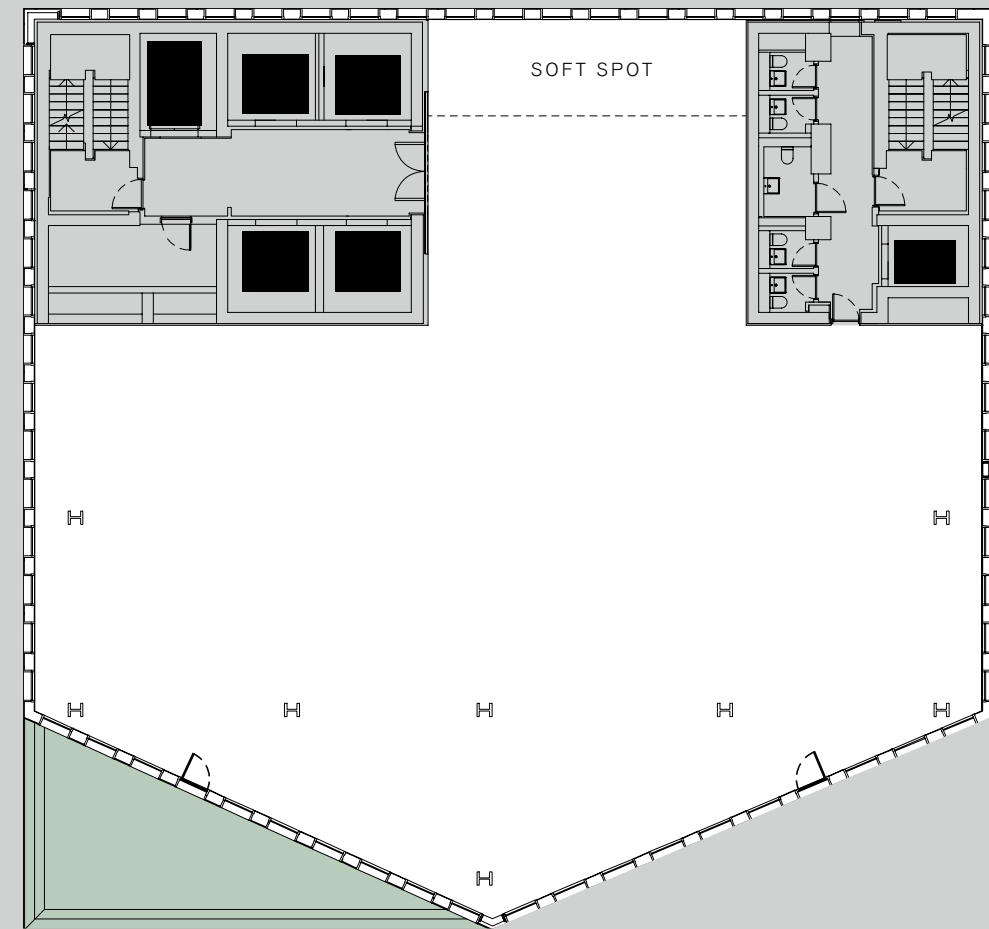
Typical floor 19-24

6,550 SQ FT / 609 SQ M

- Office
- Core
- Lifts

Floor plans not to scale. For indicative purposes only.

26



26th Floor

6,040 SQ FT / 561 SQ M

TERRACE: 420 SQ FT / 39 SQ M

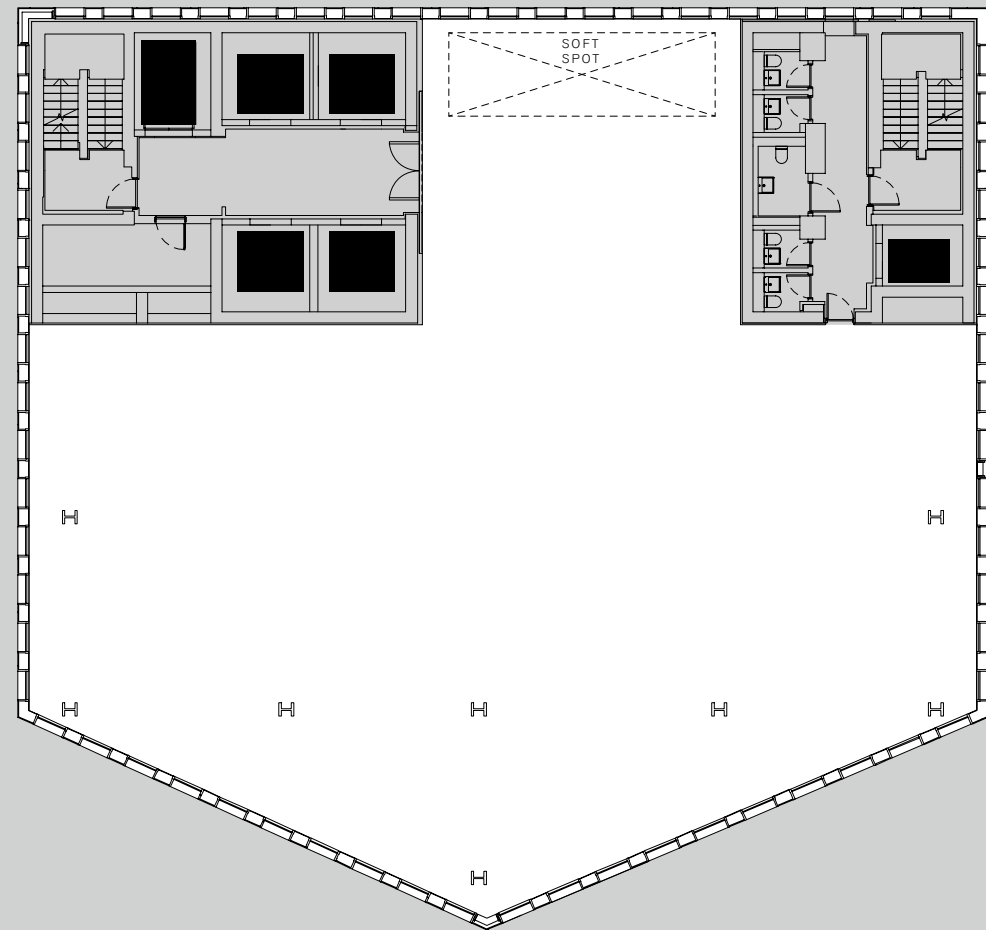
- Office
- Core
- Lifts
- Terrace

Floor plans not to scale. For indicative purposes only.

27-28

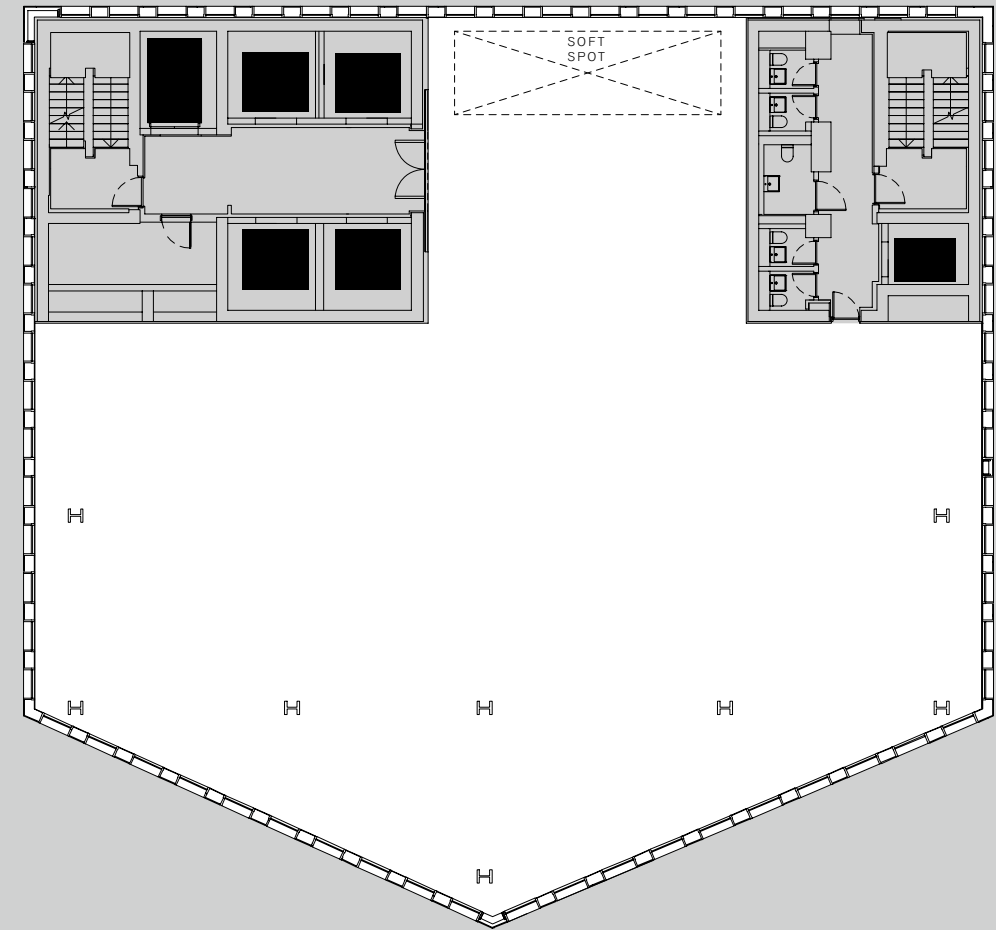


LEVEL 27:



BUNHILL ROW

LEVEL 28:



BUNHILL ROW

Duplex Floors 27-28

5,977 SQ FT / 555 SQ M + 5,712 SQ FT / 531 SQ M

Office Core Lifts

2



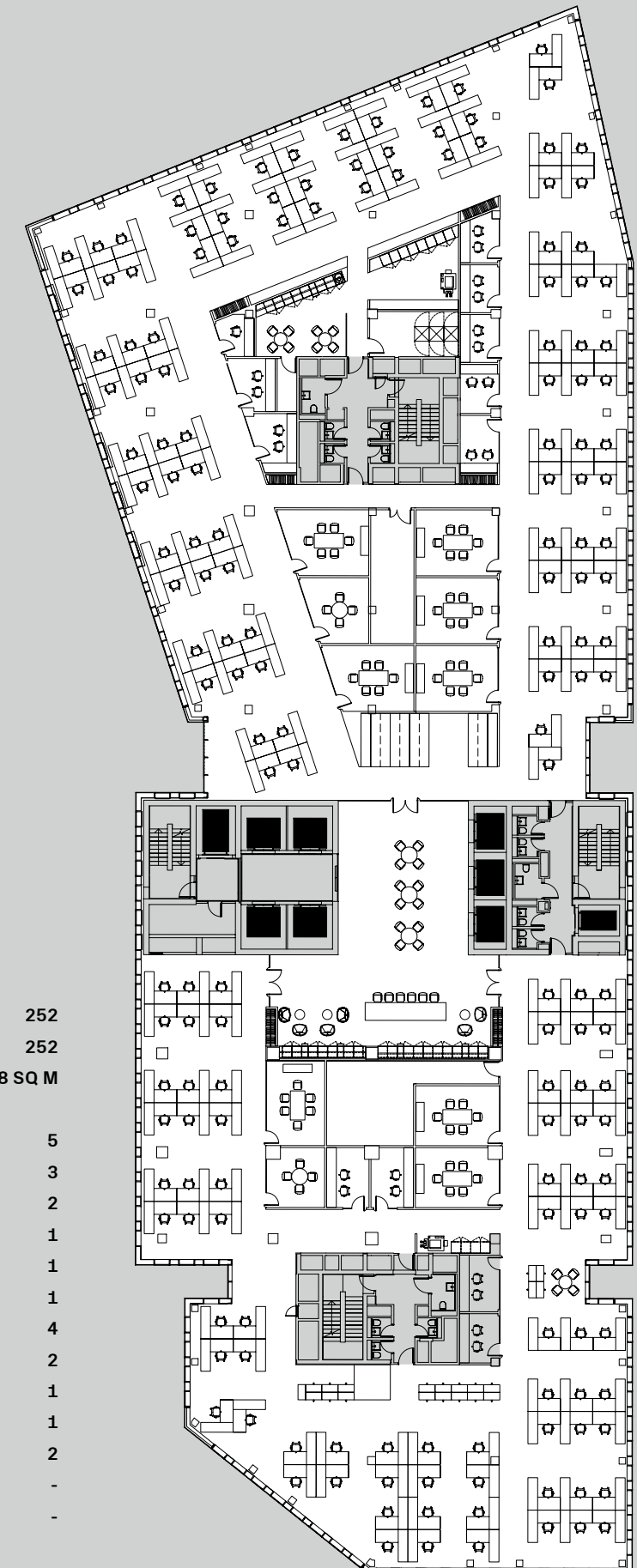
Legal / Corporate

24,484 SQ FT / 2,275 SQ M

| | |
|-----------------------|-----------|
| OPEN PLAN (2M RETURN) | 168 |
| HEADCOUNT | 168 |
| DENSITY | 1:13 SQ M |
| 6P MEET | 8 |
| 4P MEET | 2 |
| 2P FOCUS | 11 |
| 1P FOCUS | 1 |
| COPYPOINT | 2 |
| TEAPOINT | 1 |
| BREAKOUT | 1 |
| COMMS ROOM | 1 |
| OFFICE SERVICE CENTRE | 1 |
| STORE | 2 |
| ROLLER RACKING | 1 |

Office Core Lifts

3



TMT / Creative

24,539 SQ FT / 2,278 SQ M

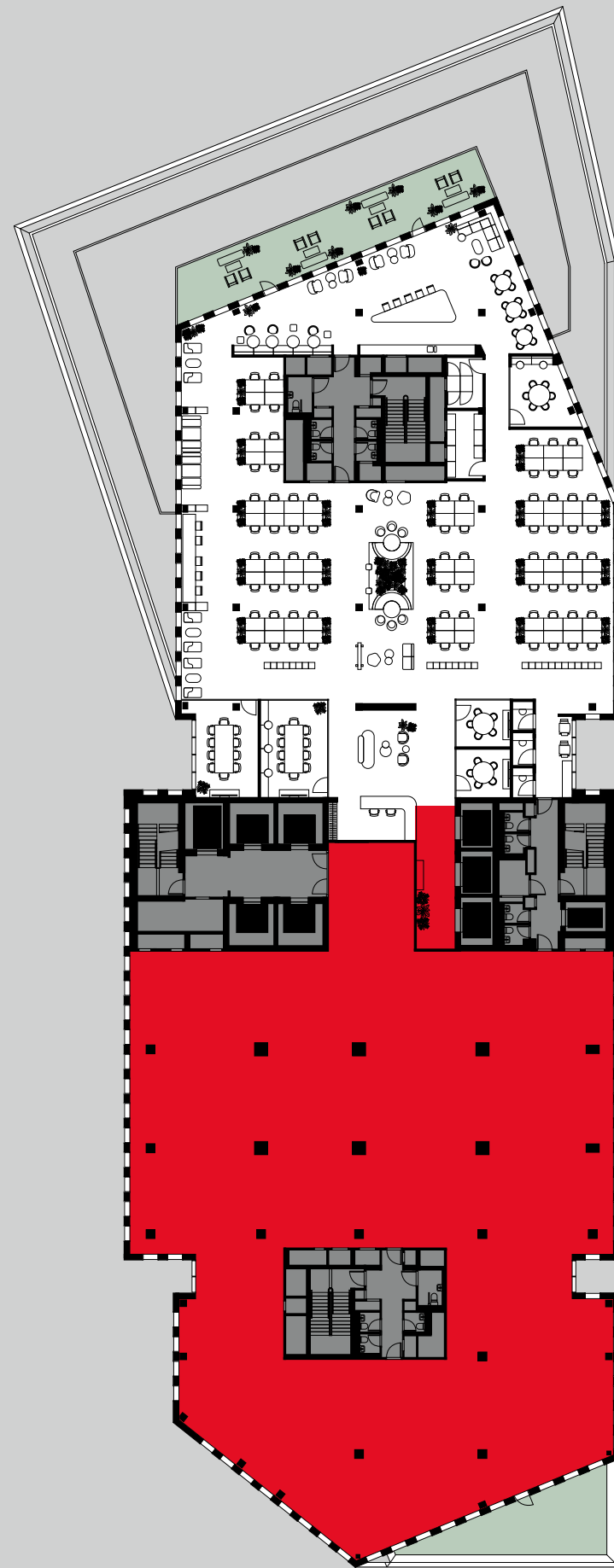
| | |
|-------------------------|----------|
| OPEN PLAN (1600MM DESK) | 252 |
| HEADCOUNT | 252 |
| DENSITY | 1:8 SQ M |
| 8P MEET | 5 |
| 6P MEET | 3 |
| 4P MEET | 2 |
| 3P MEET | 1 |
| 2P FOCUS | 1 |
| 1P FOCUS | 1 |
| COPYPOINT | 4 |
| TEAPOINT | 2 |
| COMMS ROOM | 1 |
| OFFICE SERVICE CENTRE | 1 |
| STORE | 2 |
| LOCKERS | - |
| COATS | - |

Office Core Lifts

4



ERROL ST



BUNHILL ROW

Split floorplate

8,200 SQ FT / 762 SQ M

-  Office
-  Core
-  Lifts
-  Terrace

Floor plans not to scale. For indicative purposes only.

HYLO, 103–105 Bunhill Row, London EC1Y 8LZ

Please contact the joint agents for more information. Only the brilliant need apply.



Tim Williams
+44 (0)20 7338 4848
tim.williams@realestate.bnpparibas

Tim Plumbe
+44 (0)20 3296 2005
tim.plumbe@cushwake.com

Shaun Simons
+44 (0)7788 423 131
ss@compton.london

Emma Higgins
+44 (0)7769 605 295
eh@compton.london

Alastair Robinson
+44 (0)7717 504 438
alastair.robinson@realestate.bnpparibas

James Oliver
+44 (0)20 3296 2004
james.oliver@cushwake.com

Elliott Stern
+44 (0)7834 918 700
es@compton.london

Sarah Hill
07936 338 774
sh@compton.london

DISCLAIMER: Colliers International, Cushman & Wakefield & BNP Paribas Real Estate give notice that these particulars are set out as a general outline only for the guidance of intending Purchasers or Lessees and do not constitute any part of an offer or contract. Details are given without any responsibility and any intending Purchasers, Lessees or Third Party should not rely on them as statements or representations of fact, but must satisfy themselves by inspection or otherwise as to the correctness of each of them. No person in the employment of Colliers International, Cushman & Wakefield & BNP Paribas Real Estate has any authority to make any representation or warranty whatsoever in relation to this property. March 2024.

Any areas, measurements or distances referred to herein are approximate only. All texts, photographs, layouts and computer-generated images are for illustrative purposes only and solely intend to serve as a guide as to how the property may look and may be subject to any change at any time. Floor plan illustrations are indicative only. Space plan illustrations show indicative only. All finishes are indicative, subject to final specification and selection.

Designed by Stepladder. stepladderuk.com